

# Comparative Study of Stone Masonry and Concrete Structures

Dhanya Shree B.<sup>1</sup>; Sejal Turlapati.<sup>2</sup>; Nafiya Taskeen M.<sup>3</sup>; S. Nirmala Devi<sup>4</sup>;  
Dr. D. P. Sivasakti Balan<sup>5</sup>; Thayumanaswamy<sup>6</sup>

<sup>1,2</sup> X-B, <sup>3</sup>X-A, <sup>4</sup>Guide, <sup>5</sup>Principal, <sup>6</sup>CEO

Publication Date: 2026/06/25

**Abstract:** This research paper is a comparison of stone masonry and modern concrete structures, two construction methods that are significant in today's world as they were throughout history. The purpose of this research is to analyze and compare the two construction methods in terms of their respective strength, durability, costs involved, construction methods used, and environmental effects. The methodology applied in this paper will involve the use of a literature review, and the use of data from various sources to compare both methods. The paper will also use information found from textbook materials, as well as information from case studies where each method is contrasted. A study of both construction methods will be made to assess their efficiency and appropriateness for building projects. The results will state that stone masonry is a sustainable and durable construction material but is time and labor intensive, where modern concrete structures provide higher strength, are quick to construct, and are extremely adaptable to most building applications and conditions. The paper will conclude that both materials are viable construction materials, depending on their specific application, and a combination of old and new methods may provide the best application for construction.

**Keywords:** Concrete, Construction Material, Viability, Durability, Sustainable.

**How to Cite:** Dhanya Shree B.; Sejal Turlapati.; Nafiya Taskeen M.; S. Nirmala Devi; Dr. D. P. Sivasakti Balan; Thayumanaswamy (2026) Comparative Study of Stone Masonry and Concrete Structures. *International Journal of Innovative Science and Research Technology*, 11(6), 1276-1284. <https://doi.org/10.38124/ijisrt/26jun748>

## I. INTRODUCTION

Construction is one of the most vital processes in human civilization. People have been constructing houses, temples, forts, bridges and monuments since time immemorial using different forms of construction materials. The selection of construction material depended on its availability, strength and durability, the conditions and climate and the level of advancement. Initially construction techniques involved building of stone masonry and later on the emergence of construction materials such as steel and concrete. This has helped to transform the designs of structures; to a large extent changing their form and appearance, strength and performance and also, efficiency and productivity.

As science and technology advanced modern methods of construction started evolving rapidly. The industrial revolution brought forth the advancement in materials like cement, steel and concrete. Out of these three, the usage of concrete became one of the highest around the world. Concrete is composed of cement, sand, aggregate, and water that upon curing hardens,

acquiring significant strength and load carrying capacity and can be cast into different forms and shapes as per requirement.

Modern concrete structures include Plain Cement Concrete, Reinforced Cement Concrete and Prestressed Concrete. RCC combines compressive strength of concrete and tensile strength of steel reinforcement in a desirable manner for the construction of tall buildings, bridges, flyovers, tunnels, dams, etc. Modern concrete structures are much faster to construct and more economical in the large-scale construction of urban buildings.

Both stone masonry and modern concrete structures possess its own characteristics, advantages and limitations. While stone masonry exhibits excellent durability, aesthetics, and a sense of tradition, concrete structures offer adaptability, construction speed and are suitable for modern designs. Stone masonry exhibits good weathering properties and is very less costly to maintain as compared to concrete structures; which are preferred more for modern engineering and architectural requirements.

Today sustainable and efficient construction has become a driving concern and therefore engineers and architects need to carefully select construction materials based on weathering conditions, cost, durability, maintenance, performance and also environmental factors. Understanding of these concepts of traditional stone masonry and modern concrete construction is of prime importance to engineers and architects as the selection of the right material plays a great role in the performance and efficiency of a structure and its subsequent lifespan in a specified environmental condition.

This research paper will attempt to provide a comparative analysis on stone masonry and modern concrete structures based on construction, material used, strength, durability, cost and maintenance with a comparison in between them. The research will study different aspects between these two construction materials and methods.

➤ *Hypothesis:*

Stone masonry structures exhibit greater environmental sustainability and longevity compared to modern concrete structures despite lower technological advancement.

➤ *Objectives of the Study:*

The overall aim of the study is to make comparison between traditional masonry structures and concrete structures, to make out importance of the stone masonry and concrete structures for the building industry. Both of the construction methods were widely used in different era and time, hence they played an important role for architecture and civil engineering. Therefore, the study of their characteristics, merits, limitations and applications need to be identified in detail.

One of the aims is to compare the structural performance of the stone masonry structure and concrete structure on terms of their load-carrying capacities, stabilities, resistances against environment and life span, as well as compare on their construction times, work forces, maintenance works and costs.

Another aspect is to investigate and research on the effects of stone masonry structure and concrete structure towards environment and sustainable construction. Because as we live in a concerned society, and sustainable development becomes the world main aim now. We have to acknowledge which construction method will be more environmentally friendly and use fewer resources.

In addition to the study of structure performance and other aspect, it aims to understand some actual applications on real life construction through examples and case studies of both construction methods. Through this, it will provide an understanding of where stone masonry are used at where concrete structures were chosen to build in modern architecture and civil engineering.

Lastly, the final aim is to obtain a clear comparison between traditional and modern construction methods on how well each method performs at different situations.

## II. REVIEW OF LITERATURE

**Literature Review** The data used in the study is derived from variety sources:

- Civil engineering text books.
- Research articles.
- Educational websites.
- Construction journals and reports.

**Comparative Research Methodology:** A comparative research methodology is used for identifying similarities and differences in the construction methods in which data on variables related to various factors were studied:

Strength, Durability, Cost, Construction time, Maintenance, Environmental impact, Sustainability

**Data Collection** The primary data source used is secondary data where existing information collected from various sources like text books, journals, websites and articles are analyzed. There is no experimentation done for the study. The collected information is then presented in simple descriptive explanation which makes it easy to compare between stone masonry and concrete structure

➤ *Overview of Stone Masonry:*

The tradition of building with stone is one of the oldest and most reliable construction methods known to man. In this, natural stones which are found near the locality are arranged in systematic order bonded with mortar to form solid and strong structures. Historical monuments around the globe, temples, forts, Bridges and palaces serves as a testament to the power of stone masonry. Back in the day when you did not have cement and transfer technology to make reinforced concrete, stone masonry was the way to go. Even today, due to its natural beauty and great hardness, it is popular in rural areas but also used for heritage conservation, landscaping and architectural works.

➤ *Types of Stone Masonry:*

**Rubble Masonry:** Rubble masonry is formed from stone of uneven size and shape. These stones are not dressed at all, or only just enough to fit together.

- Types of Rubble Masonry:
- Random rubble masonry
- Coursed rubble masonry
- Dry rubble masonry (without mortar)

➤ *Characteristics:*

- Uneven surface finish
- Lower cost compared to ashlar Requires less skilled labor
- Widely used in foundations, compound walls, and rural buildings.

➤ *Ashlar Masonry:*

Ashlar masonry is a higher-end stone masonry style and required craftsmanship. The stones are cut into regular shapes and uniform sizes, essentially in rectangular blocks.

➤ *Types of Ashlar Masonry:*

- Ashlar fine masonry
- Ashlar rough masonry
- Ashlar facing

➤ *Characteristics:*

- Smooth and attractive finish
- Thin mortar joints
- High strength and stability
- Used in the construction of monuments, temples, and fine architectures.

➤ *Materials Used in Stone Masonry:*

- Commonly used stones include: Granite (very strong and durable)
- Limestone (easy to shape) Sandstone(appear nice,moderate strength)
- Mortar Lime mortar (traditional, eco-friendly)
- Cement mortar (modern, stronger bonding)
- Other Materials Water (for mixing mortar) Stone dressing and cutting tools

➤ *Properties of Stone Masonry:*

- Extremely high compressive strength, allow framed structures with it
- Durability: Have a lasting strength of hundreds of years with little damage
- Thermal Insulation: Naturally insulated against temperature variations
- Very heavy: increases structural stability and the cost of the foundation Low Tensile Strength: It can not hold pulling forces properly

➤ *Construction Process:*

- Selection of Stones: It is chosen for stones that reflect strength, durability and accessibility. Dressing of Stones: Certain tools are employed to cut and shape stones to the necessary sizes.
- Preparation of Mortar: Mortar is made by mixing together cement/lime, sand and water.
- Laying of Stones: Stones are placed in horizontal layers.
- Joint Filling: Mortar is received in square bordering and they use it between joints to bind together stones.

➤ *Advantages:*

- Extremely long lifespan: Stone structures can last centuries, even millennia.
- Very high fire and weather resistance: Stone is non-combustible and withstands extreme weather.
- Minimal maintenance required: Stone requires minimal upkeep and repairs.
- Environmentally friendly (natural material): Stone is natural, durable, and recyclable.
- Aesthetic and traditional appearance: Stone adds timeless beauty and character.

➤ *Disadvantages:*

- Slow construction process: Stone masonry is labor-intensive and time-consuming.
- Requires skilled craftsmanship: Expert stonemasons are needed for quality work.
- Heavy weight increases foundation cost: Stone is dense, requiring strong, costly foundations.
- Not suitable for tall buildings: Stone's weight and structural limitations restrict height.
- Difficult to modify after construction: Alterations are challenging and expensive.

➤ *Overview of Modern Concrete Structure:*

Concrete buildings are the pillars of modern construction and infrastructure. From houses, bridges, dams, highways and tall buildings, concrete is one of the most widely used materials globally for construction. It is popular because of its great strength, durability, plasticity, and moderate cost.

The uses of concrete have evolved over time. In earlier days natural materials like stones, wood etc were widely used. With development of engineering and industrialization, concrete evolved as a suitable construction material capable of providing for various requirements of construction.

➤ *Types of Modern Concrete Structures:*

- Plain Cement Concrete (PCC):PCC is the simplest form of concrete and has no reinforcement incorporated. Its application is where tensile strength requirement is nil.
  - ✓ Uses: Flooring, pavements, foundations (as sub base) etc.
  - ✓ Characteristics: Strong in compression but weak in tension.
- Reinforced Cement Concrete (RCC):RCC has reinforcement steel bars incorporated to enhance the tensile strength of concrete, since concrete is weak in tension.
  - ✓ Uses: All types of buildings, bridges, dams, columns, beams etc.
  - ✓ Characteristics: Suitable for construction requiring load-bearing strength. Compressive strength of concrete and tensile strength of steel is combined.

➤ *Concrete Properties:*

- **Compressive Strength:** This makes it extremely useful for any structural element designed to bear load; columns and foundations are primary examples.
- **Durability:** Concrete structures are capable of lasting for several decades with correct specification and maintenance.
- **Workability:** Fresh concrete possesses good workability which makes it capable of being molded into various desired forms before it begins to set.
- **Fire resistance:** Concrete structures possess resistance to fire, it does not burn.
- **Water resistance:** Properly mixed and cured concrete has good resistance to water penetration.

➤ *Construction process of concrete structures:*

- **Mixing:** Proportions of cement, fine aggregate, coarse aggregate and water are accurately batched and mixed together thoroughly to form concrete.
- **Transportation:** The mixed concrete is conveyed from the batching plant to the construction site.
- **Placing:** Concrete is poured or placed into the molds or formwork of the structure.
- **Compaction:** Excess air pockets are eliminated and the concrete is consolidated either by vibration or by ramming. This results in increased strength.
- **Curing:** Concrete is kept moist for a specific period, typically several days, allowing it to harden and attain its full potential strength.

➤ *Benefits of Modern Concrete Structures:*

- High strength, durability and a long lifespan.
- Suitable for various design and forms.
- Adaptable for mega construction.
- Good fire and weather resistance.
- Wide availability of raw materials.

➤ *Drawbacks of Modern Concrete Structures:*

- High carbon emissions are generated from cement production.
- Shrinkage and cracking can occur under different conditions of stress.
- Requirement of skilled labor is necessary for concrete work.
- Concrete has a high weight.
- Concrete has limited tensile strength, often requiring reinforcement

**III. METHODOLOGY**

To this day, people still use both stone masonry and concrete; they just perform in different ways, and it causes builders and engineers to choose appropriate methods and materials in construction project planning. In earlier times stone masonry has always been the popular technique in construction of houses, temples, forts, and bridges. Many of these historic buildings are still intact to this day, and they also have a high degree of strength and durability. Unlike concrete however; this construction has grown to become an important element to most contemporary construction projects due to its versatility in structural designs and needs.

*A. Comparison Points*

- **Strength:** Stones are very good at withstanding pushed or compressive forces; however they are unable to withstand being pulled or stretched. Thus, stone masonry is not suitable in construction projects that deal with forces that tend to bend or pull a structure, as opposed to concrete construction; reinforced concrete, that will overpass the deficiency of being pulled or stretched.
- **Durability:** Structures built using stone masonry were found to belong-lasting with centuries of history, such as stone castles and temples; they would last longer than hundreds or even thousands of years with minimal maintenance. Buildings made of concrete on the other hand also have very good durability but may suffer some structural weakness in the form of cracks over a period of time.
- **Cost:** Stone masonry could be quite affordable in areas where stones were easily available. However, to create a stone masonry structure; manual cutting, molding and building of the stones consumes a great deal of human labor, which increases the expense of the project. However, concrete construction is much cheaper on larger construction projects.
- **Construction Time:** stone masonry construction is known to be a time consuming practice; as each stone must be carefully measured, shaped, and carefully placed. Construction with concrete however requires much less time as one is able to pour great quantities of concrete quite rapidly.
- **Flexibility:** Due to the fact that stones are extremely rigid it is difficult to make precise, complex shapes with stones which gives it its rigidity, making stone masonry construction less suitable in complex structural designing. However concrete is extremely flexible and can mold into any structure one desires.

- **Maintenance:** Stone masonry needs very little maintenance. Concrete structures will need a moderate amount of maintenance, as cracks may appear and rust to its reinforcement may be present.
- **Aesthetic Value:** Stone masonry structures are very unique and traditional, it creates a more antique look to buildings, Concrete construction provides a more modern and plain, sleek, contemporary look.
- **Environmental impact:** concrete construction will release amounts of carbon into the air which has been shown to be detrimental to the planet; as opposed to concrete construction where stones do not need a great deal of construction process before hand, making it somewhat more environmentally friendly.

- **Availability:** As seen, if a rocky and mountainous terrain occurs, stones can be made very easily and the most commonly used material for buildings, but concrete is more adaptable to constructions which do not have access to stones, and its availability in these terrains will prove useful and beneficial.

As a general view, stone masonry is suitable in the construction of structures that will likely last as long as possible, for example monuments and retained walls, as well as structures that are being designed to look ancient, for instance historical museums. However, Concrete is more suited in the construction projects which focus mainly on strength, time and expenditure rather than a traditional look.

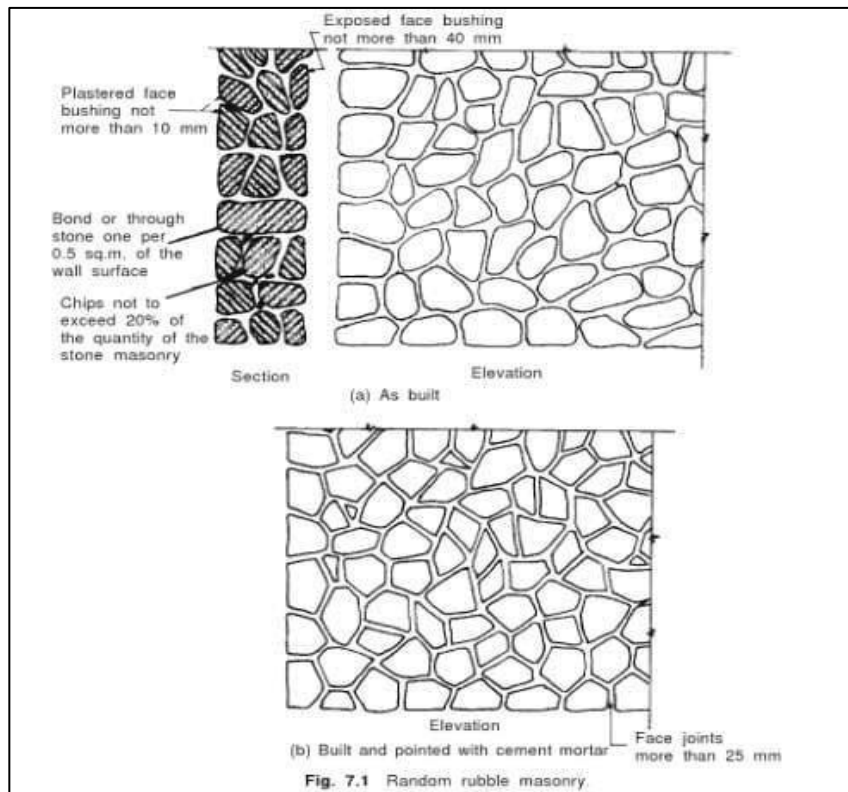


Fig 1 Stone Masonry

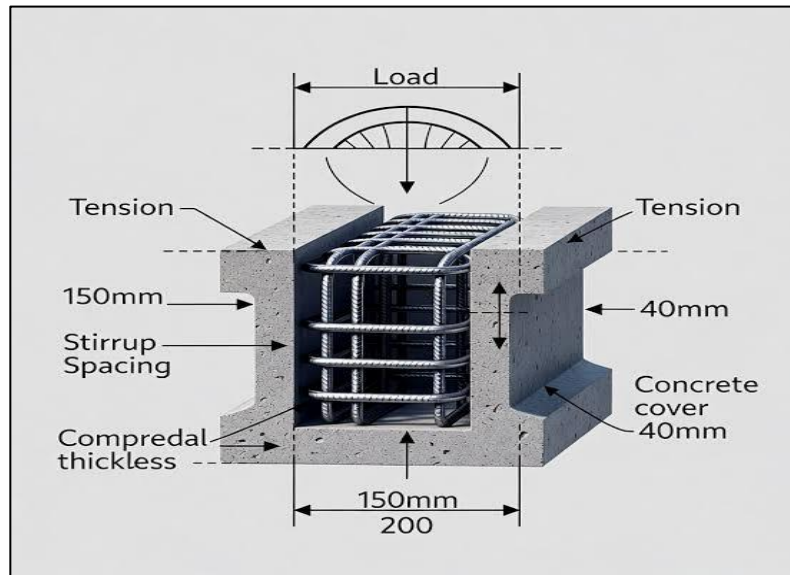


Fig 2 Concrete Structure

### B. Case Study

#### ➤ Case Study 1: Stone Masonry Structure - Brihadeeswarar Temple:

- The Brihadeeswarar Temple is considered one of the most stunning examples of stone masonry architecture within India. Construction on the temple began during the rule of King Rajaraja Chola I under the Chola Dynasty, in the 11th century. Situated in the Indian state of Tamil Nadu, it is regarded as a significant monument in the nation's history and architecture. The temple is constructed primarily from granite stones, lending it exceptional strength and longevity.
- The compressive strength of the stones utilized in the temple made it incredibly durable and stable for over a thousand years, enabling it to withstand various elements, including weathering, heavy rainfall, intense sunlight, and prevailing environmental conditions.
- Furthermore, the thick walls constructed from stone helps to keep the interior of the temple at a cooler temperature.
- Though a tremendous amount of time, labor, and materials were involved in its construction, the Brihadeeswarar Temple has remained standing, requiring minimal maintenance over centuries, thus highlighting the remarkable durability of stone masonry constructions. It holds tremendous historical, artistic, and cultural significance for visitors from around the world.
- The case of the Brihadeeswarar Temple is a testament to the ability of traditional stone masonry construction methods to produce strong, durable, and aesthetically pleasing structures that have stood the test of time.

#### ➤ Case Study 2: Concrete Structure - Burj Khalifa:

- The Burj Khalifa is the premier example of modern concrete construction globally. Erected in 2010, it currently stands as the world's tallest building. Its design was achieved using sophisticated engineering principles and contemporary reinforced concrete techniques.
- The primary building materials used for the Burj Khalifa are Reinforced Cement Concrete (RCC) and steel reinforcement which are required to sustain its great height and mass. The use of high-strength concrete and steel allowed engineers to design a building capable of withstanding powerful winds, immense loads, and severe weather patterns.
- In stark contrast to ancient stone masonry constructions, the Burj Khalifa was built utilizing modern cranes, pumps, machines and advanced construction methods, making it significantly quicker and allowing for a far more flexible and innovative architectural design..
- This example is ideal for showcasing the strengths of modern concrete construction: ease and speed of building, design flexibility, incredible load bearing capacity, and the fact that it can accommodate modern city infrastructure demands. However, as a downside when compared to the traditional method, concrete structures require more upkeep in the long run to keep them structurally sound and looking great.
- This magnificent example serves to showcase the incredible advancements in modern engineering and the way concrete construction has revolutionized our ability to erect structures of enormous size and complex design.

## IV. DISCUSSION

### A. Comparative Analysis of the Two Structures:

- Both the Brihadeeswarar Temple and the Burj Khalifa are extraordinary structures, each representing a distinct era in history, technological advancements, and construction methodologies.
- The Brihadeeswarar Temple epitomizes the durability, inherent strength, and artistic appeal of traditional stone masonry. Having stood for over one millennium and requiring minimal maintenance, it is a monument of enduring quality. However, the construction of such a structure is incredibly time consuming, labor intensive and cannot provide the flexibility necessary to facilitate modern architectural plans.
- The Burj Khalifa, on the other hand, stands as a testament to modern engineering excellence and the efficiency of concrete construction. A modern concrete structure is built at an accelerated rate and permits incredibly tall and technically advanced design plans, which is essential to the functioning of modern urban life. Yet, when compared to the ancient structures made from stone masonry, concrete constructions typically have a more limited lifespan unless proper and diligent maintenance is conducted.
- These two case studies clearly demonstrate that both modern concrete structures and traditional stone masonry constructions are significant in their own ways. It must be decided on which one is best to use based on the desired application, price, location, climatic condition and the plan desired for the building.

### B. Environmental and Sustainability Study:

This section compares between stone masonry construction and modern concrete construction in terms of their impacts to the environment and its sustainability.

#### ➤ Carbon Footprint:

Carbon footprint is the measure of the quantity of carbon dioxide produced during the production of material. Concrete has a high carbon footprint, due to the high amounts of CO<sub>2</sub> produced during the production of cement and it is also one of the biggest polluters on earth. Stone masonry construction, on the other hand, has a low carbon footprint due to stone being a natural resource requiring only minimal production. Therefore it has less impact to the environment in terms of pollution.

#### ➤ Energy Consumption:

Producing concrete has a higher energy cost during production in the form of materials, the production of cement as well as transportation to sites. This therefore increases the environmental impacts associated with concrete. Stone masonry has lower energy use in the form of natural resources;

stones need to be quarried, transported, and placed at the construction site, therefore less energy is used.

#### ➤ Resource Use:

Concrete construction uses resources such as cement, sand and aggregates, of which can be found relatively in wide varieties on earth. However with recent rapid construction, the sources of sand are diminishing and this has had detrimental effects on rivers and ecosystem. Stones are also a natural resource, but can also be a depleting resource with uncontrolled quarrying activities which have impact to land use and natural habitat.

#### ➤ Eco-Friendliness:

Stone masonry construction is eco-friendly as it utilizes natural resources and is an eco-friendly building material. Minimal resources and energy are needed. However, concrete is less eco-friendly but by using certain procedures like replacing the cement with flyash or recycled building material with reduced usage of the material and minimized amount of waste is being produced as it reduces the construction waste as compared to other.

#### ➤ Waste and Recycling:

Concrete construction leads to the production of wastes on site and demolition wastes are of high value as they can be reused. Construction wastes from stone masonry have low value but can be reused as filler materials in other applications. Therefore stone construction has little impact with respect to waste.

### C. Application:

Although both stone masonry and modern concrete structures are heavily employed in the building industry, their applications vary greatly based on the function of the building, design requirements, required strength and prevailing environmental conditions.

Stone masonry is largely confined to projects where durability, strength, and traditional look is of paramount concern. Because of its inherent excellent compressive strength and its good resistance to the weathering agents, stone masonry is frequently employed for constructing historic monuments, temples, forts, palaces, and other heritage buildings. Many an ancient building constructed with stone masonry can be seen till today in quite a well-built state due to the enormous life and stability of stone masonry structures.

Modern concrete structures, predominantly reinforced concrete structures have widespread use in current times since concrete is durable, versatile and can cater to large scale constructions. Residential buildings, commercial complexes, schools, hospitals, shopping malls, factories and office buildings often employ reinforced concrete structure as the building material of choice. Concrete facilitates rapid construction and can be molded into different shapes and sizes.

Both stone masonry and concrete structures have a significant place in the building industry. While stone masonry is ideal for construction and projects of aesthetic or traditional importance, concrete is best suited for modern infrastructure and large-scale engineering endeavors.

## V. RESULT

The world is progressing rapidly with advancement of technologies and developments in engineering practices and material usages. It is quite likely that stone masonry construction and modern concrete structures will witness significant improvement in coming times to support the increasing demand for safe and sustained construction activities in future.

### ➤ *Sustainable Construction:*

Environment is a widely discussed subject in current scenario. Due to increasing environmental concerns the scientists are exploring new sustainable ways to construct structures so that the levels of pollution and exploitation of natural resources are reduced to a considerable extent. Traditional concrete construction consumes considerable carbon dioxide thus contributing to environmental pollution.

### ➤ *Self-Healing Concrete:*

The material used is known as 'self healing concrete', which automatically mends cracks in it. It has been demonstrated that by using specific bacteria or special chemical ingredients within concrete, it can self-heal microscopic cracks formed. This would make construction of structure far more durable thus leading to a reduction in construction cost of infrastructure and building maintenance cost.

### ➤ *Hybrid Structures:*

Hybrid construction systems using stone masonry for its traditional value and architectural significance combined with modern concrete and steel structures are likely to play a greater role in future. Stone masonry may be used in decorative purposes in future buildings whereas concrete and steel may form structural backbone for strength. The benefits would be both traditional and modern designs coupled with strength.

### ➤ *Other Developments:*

Strength, durability and sustainability of stone masonry and concrete structures will also be enhanced. Designing disaster resistant buildings which may be resistant to earthquakes, cyclones, floods and other natural phenomena will be the main focus.

In future, there is going to be a balance between tradition and technology in construction industry. Stone masonry might be more used in preserving our historical and traditional architectural heritage whereas the modern structures built using concrete technology will fulfill our rapidly growing needs.

## VI. RECOMMENDATIONS

In the future, the construction industry should focus on adopting sustainable and environmentally friendly building materials to reduce pollution and conserve natural resources. Greater research and development should be carried out on self-healing concrete to improve its performance and make it more affordable for widespread use. Hybrid construction systems that combine the aesthetic and cultural value of stone masonry with the strength of concrete and steel should be encouraged. Emphasis should also be placed on designing disaster-resistant structures capable of withstanding earthquakes, floods, and cyclones. Additionally, green building practices, advanced construction technologies, and energy-efficient designs should be promoted to enhance durability, reduce maintenance costs, and ensure sustainable development. Proper training, awareness programs, and government support will further help in achieving safer, stronger, and more environmentally responsible construction in the future.

## VII. CONCLUSION

- In this research paper, a comparative study on strength, durability, cost, construction period, environmental impact and other aspects were presented in detail regarding stone masonry structures and contemporary concrete structures.
- From the analysis it is concluded that it is evident that each construction material possesses some merits and demerits. Stone masonry can be best suitable for the existing construction as it is sustainable and it may also be suitable for low-rise constructions. On the other hand, concrete is good for modern architecture.
- In sum, it could be concluded that concrete structure vs stone masonry construction entirely depends on the desired structure, budget and also environmental issues and size of construction. The combined structural technique of the conventional and modern methods can pave the way to achieve a better outcome; it combines efficiency with durability and eco-friendliness, helping future structures become more lasting.

## REFERENCES

- [1]. Allen, E., & Iano, J. (2019). *Fundamentals of building construction: Materials and methods* (7th ed.). Wiley.
- [2]. American Concrete Institute. (2019). *Building code requirements and specification for masonry structures (TMS 402/602-16)*. American Concrete Institute.
- [3]. Ching, F. D. K. (2020). *Building construction illustrated* (6th ed.). Wiley.
- [4]. Encyclopaedia Britannica. (n.d.). *Masonry*. Britannica. <https://www.britannica.com/technology/masonry>
- [5]. Hendry, A. W. (2001). *Structural masonry* (2nd ed.). Macmillan Press.

- [6]. International Code Council. (2021). *International building code (IBC)*. International Code Council.
- [7]. Kaushik, H. B., Rai, D. C., & Jain, S. K. (2007). Stress-strain characteristics of clay brick masonry under uniaxial compression. *Journal of Materials in Civil Engineering*, 19(9), 728–739.
- [8]. Lawrence, S. J., & Page, A. W. (2000). Bond studies in masonry construction. *Construction and Building Materials*, 14(7–8), 373–382.
- [9]. National Geographic Society. (n.d.). *Rocks and minerals resource library*. <https://education.nationalgeographic.org/resource/resource-library-rocks-and-minerals/>
- [10]. Sinha, B. P., & Davies, S. R. (2003). *Design of masonry structures*. CRC Press.
- [11]. The Masonry Society. (2016). *Building code requirements and specification for masonry structures (TMS 402/602-16)*. The Masonry Society.
- [12]. Wikipedia contributors. (n.d.). *Stone masonry*. In *Wikipedia*. [https://en.wikipedia.org/wiki/Stone\\_masonry](https://en.wikipedia.org/wiki/Stone_masonry)