

Indocast Risers: A Portfolio of Sleeve Manufacturing Excellence

¹Prashant S. Bhandare
Computer Engineering
SVERI's College Of Engineering(Poly),Pandharpur

²Saptesh Prashant Jawalkar
Computer Engineering
SVERI's College Of Engineering(Poly),Pandharpur

³Aditya Ganesh Bachate
Computer Engineering
SVERI's College Of Engineering(Poly),Pandharpur

⁴Abhijeet Sunil Kasture
Computer Engineering
SVERI's College Of Engineering(Poly),Pandharpur

⁵Pratik Dattatray Joshi
Computer Engineering
SVERI's College Of Engineering(Poly),Pandharpur

Abstract:- Welcome to Indocast Risers world of manufacturing excellence. In this portfolio, we unveil our dedication to precision and craftsmanship, showcasing a range of high-quality sleeves meticulously designed to meet your specific requirements. With innovative solutions for packaging and industrial applications, we're setting new industry standards. Explore our passion for creating sleeves that stand out. Join us in our pursuit of manufacturing mastery, where every sleeve tells a story of quality and innovation. At Indocast Risers, we don't just make sleeves; we redefine them.

Keywords:- Manufacturing; High Quality Sleeves; Interactive Maps; Constraints (Key Words.)

I. INTRODUCTION

Welcome to Indocast Risers, your gateway to a world of manufacturing excellence, now at your fingertips. Our web application brings you closer to the heart of our craft. It's your personal tour through our innovative sleeve solutions, designed to meet your specific needs. Whether you're looking for customized packaging solutions or cutting-edge industrial applications, our digital platform is your window into precision and quality. At Indocast Risers, we've harnessed the power of technology to redefine the way you explore and experience sleeves. Join us on this digital journey as we showcase how we've transformed sleeves from mere products into a seamless and accessible art form.

The system and its functions' will be a powerful tool for business growth by streamlining the process of accessing high-quality sleeves. By offering a user-friendly platform, it empowers businesses to find tailored solutions efficiently, saving time and resources in the process. This accessibility enables rapid product development, enhancing a company's ability to adapt to changing market demands and remain competitive. Simultaneously, it simplifies the customer

experience, helping individuals find the perfect sleeves for their needs, fostering satisfaction and repeat business, ultimately leading to sustained growth for both the business and its customers.

A. Portfolio Showcase:

This module will display your portfolio, highlighting your best sleeve manufacturing projects. Users can view high-quality images and detailed descriptions of your work, showcasing your expertise.

B. Interactive Maps:

The maps module will offer an interactive geographical representation of your clientele, manufacturing facilities, or other relevant locations. Users can explore these maps for a visual understanding of your reach and operations.

C. Query and Contact Form:

A query page will allow users to submit inquiries, requests for quotes, or general questions. This module will enable users to get in touch with your team easily and efficiently.

D. Testimonials and Reviews:

We will include a section where clients' testimonials and reviews are displayed, providing social proof of your manufacturing excellence.

E. Search Functionality:

To make it easier for users to find specific content in your portfolio or contact information, implement search functionality within your web application.

This simplified web application, focusing on your portfolio, maps, and query/contact page, will help organization to effectively showcase their work, provide users with essential information, and facilitate communication with potential clients, contributing to their business growth and customer satisfaction.

II. LITERATURE REVIEW

A. Inexo

INEXO Cast Essence results Pvt.Ltd., is a dynamic and professionally managed Organization, committed to the manufacture of high-quality foundry consumables similar as Exothermic Riser Sleeves, separating Riser Sleeves, Direct Pour Sleeves and other foundry products. Delivery capability, product and process development, quality assurance and personalized service are the emblems of INEXO' success story. The capability to understand the requirements of the client and to deliver the most cost-effective results is the moxie we trains, that have resisted the test of time since 1989. INEXO Cast Essence resultsPvt.Ltd., is a name to reckon with in the foundry feeding system manufacturing space in India. We're a encyclopedically riveted manufacturing reality with a special focus on the design and development of feeding system for foundry operations. We're honored across India and other overseas functional requests as a leading and the most favored supplier.

INEXO has made an unforgettable mark in the foundry assiduity since its commencement way back in 1989 and has sculpted a niche for itself as a favored supplier of foundry feeding systems through high- performance, futuristic, awless products and client- riveted business model.

Headquartered at Chennai, India, INEXO has earned over 250 guests across India, Malaysia and UAE. INEXO has a state- of- the- art manufacturing installation with a oor space of over 60,000sq.ft. casing sophisticated product installations to meet the growing client conditions. (2)

B. Foseco

Foseco, is a world leader in the force of foundry consumables and results. The foundry process is largely successional and critically dependent on thickness of product quality and productivity optimization. Our results and advanced computer simulation ways allow foundries to reduce casting blights similar as perforations, loss depression, eliminations, scabbing, penetration or veining. Hence the Foseco products reduce labor- ferocious fettling and machining, minimize essence operation conditions, impact the essence solidification process and automate molding and casting, therefore reducing cost, energy operation and mold size.

The exertion of molten essence, the nature of the mould used and, especially, the design of the way essence flows into the mould are crucial parameters in a foundry, determining both the quality of the finished castings and the labour, energy and essence operation effectiveness of the foundry. The products and associated services to foundries ameliorate these parameters.

The comprehensive range of foundry consumables and outfit for iron, sword and non-ferrous foundries includes separating and exothermic feeding systems, pollutants for liquid iron, sword and aluminum, direct pour technology, solidification simulation software, non-ferrous essence

treatment and degassing systems, essence sluice inoculation, advanced coatings, environmentally friendly binders, lining systems for dippers and furnaces as well as energy saving trials. (1)

C. RMS Engineering

Every manufacturing sector is going through a transformative period, and it's into the modest growth phase. Also, numerous processes are under invention. The same thing is with RMS Engineering; it's negotiating establishment provides a significant focus on delivering intertwined products and services in a cost-conscious approach. It helps the company in achieving advanced profitability.

RMS Engineering is the famed name offering extraordinary manufacturing services. We believe in metamorphosis, invention, invention, and hence, we keep our workers busy in streamlining their chops with new ways and tools. Our entire platoon put sweats to maintain transparent processing and make it easy to identify any backups within the association.

We're Pune grounded sole procurement establishment in 2006. We're connected with the famed merchandisers of the request. Also, we've experts who guide us to offer a qualitative range of products as per the global set norms. Also, we're laboriously involved in Coating Service.

We're a manufacturing company that has comprehensive specialized support. It allows us to enhance the core manufacturing processes. We use a nimble approach, develop the strategy, and plans by using the current script. (3)

D. Rukmini Engineering Works

Established in the time 1996, we, "Rukmani Engineering Works", are an ISO 90012008 pukka establishment that's engaged in manufacturing, supplying and exporting a wide array of Steel, Nickel Base Alloy, Engineering & Automotive Castings. In addition to this, we offer Industrial Valves, Pump & Special Castings. Also, we're check stopcock casting suppliers, heat resistant sword casting, Stainless Steel Castings Supplier and numerous further. All our offered products are manufactured using high- grade material that's sourced from utmost trusted and dependable merchandisers of request with the aid of our sourcing agents. These products are appreciated by guests for their erosion resistance, dimensional delicacy, soundness, fine finishing and high tensile strength.

They've established a multifaceted structure installation at our demesne for carrying out the business operations in a smooth manner. This installation is installed with rearmost machines and advanced technology that are basically needed in the manufacturing process. Also, we've employed competent professionals who help us in offering an impeccable array of products to guests. Post-production, these products are stringently audited by educated quality regulators on certain parameters so as to insure their disfigurement-free nature. likewise, our logistics labor force

make sure that the entrustments are delivered at guests' destination within the requested time- frame. Due to these reasons, we've erected a vast client- base across the globe and especially in the regions of Caribbean, East Europe, East Asia and Central America. (4)

E. Summary:

The goal of this research was to gain a comprehensive understanding of various manufacturing and foundry companies, such as INEXO, Foseco, RMS Engineering, and Rukmani Engineering Works, to assess their strengths, areas of specialization, and market presence. This research aimed to inform the development of a web application for Indocast Risers by drawing insights from successful industry players. By studying the companies' operations, product offerings, and customer focus, we can derive valuable insights on best practices, industry trends, and customer expectations. This knowledge will prove instrumental in crafting an effective, user-centric, and competitive web application for Indocast Risers, enhancing their online presence and customer engagement while aligning with industry standards and client needs.

The research also serves to identify potential areas for differentiation and innovation in Indocast Risers web application. By examining how these industry leaders maintain quality, customer satisfaction, and efficient operations, we can apply these lessons to deliver a web application that not only showcases their manufacturing excellence but also sets them apart in the competitive landscape

III. METHODOLOGY

It's a process of acquainted conditioning, carried out through systems that aim to incorporate ideas or chops to be expressed or executed through conduct of communication to the group; bear that commodity new be tried; to elect and order the ideas (the intellectual exertion) in order to express a new degree of skill or knowledge.

These systems are conducted under the guidance of the schoolteacher and the work is carried out by the scholars aiming at the accession of certain knowledge, chops and values.

The design work takes place in three abecedarian phases. The expression of a problem, the hunt for results, and its donation behind a communicative action.

Each of the phases should be estimated according to their applicability, and the communicative action should present the possible results to break the problem.

The thing of the design work is to expand the eventuality of each pupil. This is achieved through the design, which starts from the hunt for the result of a problem, and which is carried out effectively in a given space and time in an educational environment, allows to develop a knowledge accompanied by a communicative act on the real.

The work with systems is a offer of education concentrated on the conformation of capabilities, which seeks the development of active literacy through the participation of scholars, avoiding the "traditional" pedagogy (unresistant, verbal and theoretical).

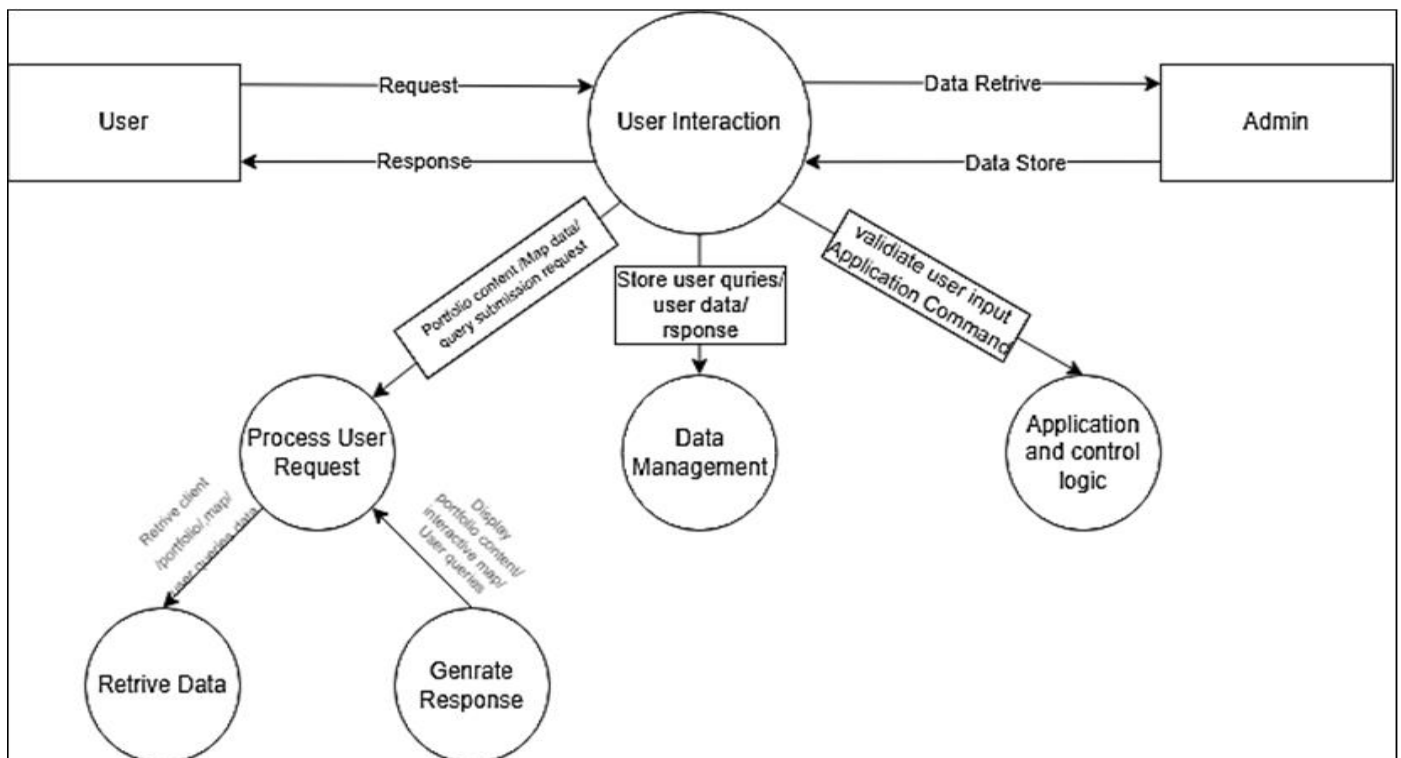


Fig 1 Second Level Data Flow Diagram (2nd Level DFD) OF Indocast Risers Web-Site:

IV. PROBLEM STATEMENT

The main problem in the existing system using a card as a portfolio can have several disadvantages. Firstly, the limited space on a card restricts the amount of information and detail that can be included, potentially making it challenging to convey the full scope of one's work or achievements. Secondly, cards are vulnerable to physical damage, loss, or fading over time, which can result in the deterioration of the portfolio's content. Lastly, in an increasingly digital world, reliance on physical cards may seem outdated and less convenient for sharing and updating information, particularly in professional and networking contexts. We will overcome using the digital portfolio.

V. PROJECT SCOPE

The scope of this project encompasses the development of a dynamic and user-centric web application for Indocast Risers, aiming to showcase their extensive portfolio of manufacturing excellence, particularly focusing on the production of sleeve-related components. This application will incorporate interactive maps, providing visual representations of the geographical reach and distribution of Indocast Risers' facilities and clients, offering users an informative and engaging experience. Additionally, the platform will feature a query page, enabling users to submit inquiries, requests, and feedback seamlessly, thereby fostering direct communication with the company. The web application will prioritize responsive design, ensuring compatibility with various devices and screen sizes to enhance accessibility and user experience. It will be built with scalability and modularity in mind, accommodating future expansion and feature additions. Ultimately, the project's scope seeks to bolster Indocast Risers' online presence, customer engagement, and overall competitiveness in the manufacturing industry by delivering a well-designed, interactive, and user-friendly digital platform.

VI. CONCLUSION

In conclusion, this web application project for Indocast Risers represents a pivotal step in enhancing their digital presence and customer engagement. By effectively showcasing their manufacturing excellence, interactive maps, and query functionalities, Indocast Risers is poised to strengthen its industry reputation and global reach. The responsive design ensures accessibility across a range of devices, further expanding the project's impact. The successful execution of this project is not only a testament to the commitment to excellence but also a strategic investment in the future of Indocast Risers, as it establishes a user-friendly and innovative platform. With a focus on quality, innovation, and user satisfaction, this web application project stands as a milestone in Indocast Risers' journey towards sustained success and industry leadership.

REFERENCES

- [1]. <https://fosecindia.com/>
- [2]. <https://inexocast.in/>
- [3]. <https://www.rmsengg.com/index.html>
- [4]. <https://www.rukmanisteelcastings.com/>