

# Performance Enhancement of Photovoltaic Systems

Shreya Rao<sup>1\*</sup>, Deepthi Shetty<sup>2\*</sup>, Rohan K U<sup>3\*</sup>, Kishan<sup>4\*</sup>, Vindhya<sup>5\*</sup>

\* Dept. of Electronics & Communication Engineering.

Mangalore Institute of Technology & Engineering, Moodabidri, India

**Abstract:-** The Solar photovoltaic (PV) energy has many advantages which makes it one of the great sources for power generation. Photovoltaic systems are linked to the electrical grid with the help of a DC-AC converter and a DC-AC inverter. The project's major goal is to improve the grid's interoperability with PV installations. To get the desired performance, the converter as well as inverter characteristics are adjusted. The inverter is controlled by an ARPI (adaptive reference PI) controller, which improves the conduction of the system by allowing for low voltage ride through (LVRT). It also smooths out the oscillations in PV-generated electricity that occur because of the due to environmental changes. The converter is utilized to provide MPPT while the PV system is under varied environmental conditions (MPPT). To assess the efficiency of the suggested method, a simulation of system performance employing the suggested ARPI is provided.

**Keywords:-** PV systems, PI controller, MPPT.

## I. INTRODUCTION

Solar photovoltaic systems have emerged as among the most significant forms of renewable energy production in recent years. This significance is universal owing to the stats of existing PV systems and the predicted future increase. By 2021, it was estimated and expected that roughly 1TW of electricity will be generated in PV systems. There are several issues in integrating Photovoltaic system to the electricity grid. These difficulties result in variations in the power produced by the PV system as a result of environmental changes such as solar irradiance and temperature, non-linearities in power electronics components, non-linearities in PV attributes such as converters and inverters, as well as reliability and stability. Grid faults are also other kind of technical challenges that show up during the unusual operating conditions. The most common grid failures are short circuits and sagging situations, which are caused by a rapid rise in load, however faults are not restricted with those at the common coupling point (PCC). The state of grid whether it is connected to PV system or not is determined by these faults. Therefore, some measures are needed to be taken in order to determine whether PV system is connected or disconnected from the grid. During failures, the grid will describe whether PV systems can be connected or detached from the grid, as well as offer low voltage ride through (LVRT) and fault ride through (FRT). There are two zones depending on the PCC operating voltage during disturbances: trip and connection. A DC-AC inverter and DC-DC converter are utilized to link the Photovoltaic system to the electrical grid. In order to increase PV system connectivity with the electrical grid, several solutions are proposed. Using a MPPT approach, a DC-DC chopper controlling mechanism is implemented to optimize the captured energy through PV

systems during climatic fluctuations. By managing the reactive and active load flow in between both the photovoltaic system and the grid, the DC - AC inverters control techniques, but on the other hand, aim to improve the effectiveness of grid-combined Photovoltaic system under abnormal operation scenarios.

## II. LITERATURE REVIEW

[1] Several control strategies were tried to control the amount of active power present in between Photovoltaic system and the grid, thereby optimizing the levels of voltage at PCC by modifying the grid side inverters. According to the findings, PI controllers were employed to satisfy the LVRT requirements of Photovoltaic systems. Furthermore, by managing the voltage and current of grid side inverters, PI controllers are commonly utilized to improve LVRT capabilities.

[2] The continuous expansion in solar power output has produced substantial integration operations and challenges for power utility system engineers of present grid network. This study focuses on the steady-state integration effects of solar Photovoltaic electricity on established dissipation and dispense system. The study points at how steady state combination affects the voltage level, reference voltage, transmission losses, voltage drop, and network voltage stability in an existing network.

[3] Specifically, in proportional plus integral and derivative (PID) feedback is the most significant and powerful concept in control systems. It is accurate and effective in all sorts of control systems. The role of PID feedback, which is regarded the primary controller of all control loops, is examined. PID is used as controller feedback in over 90% of control systems, and its appropriate application necessitates skills, knowledge, and controlling approaches. As a result, there is a qualitative analysis of PID for applications in this work.

[4] This study discusses the challenges of connecting solar PV systems to the main grid. The performance of a grid-integrated rooftop solar PV system, as well as the proposed control approach, is shown under various operating situations. The current solar power generating scenario in India has also been examined in this research for stand-alone, grid-connected and rooftop PV systems.

[5] Large-scale PV grid-connected power generating systems have posed a threat to the grid's stability and management, and also the grid-tied solar system with an energy storage device. An 8 kW PV system and an energy depository were built to solve these challenges. The battery constituents of the system can be linked to the grid in DC or

AC mode. The viability and adaptability of the MPPT charge controller are confirmed by a dynamic model incorporated into the household solar Photovoltaic system.

[6] This study established a hybrid strategy based on power quality (PQ) augmentation in a grid-combined Photovoltaic system. The hybrid technique combines the Radial Basis Function Neural Network (RBFNN) and Proportional Integral controllers.

[7] Solar-grid assimilation is a method for combining large volumes of solar energy produced by Photovoltaic or CSP systems it in to an existing power infrastructure. In areas like solar component installation, fabrication, and operation, this technique requires a lot of thought and research.

[8] All grid-connected solar PV power plants must install the appropriate constituents to continually monitor solar irradiation, surrounding temperature, wind speed, and other meteorological data, as well as the generation of both DC and AC electricity.

[9] This article discusses the possibility of grid-integrated solar photovoltaic power creation system to fulfil energy demands throughout the day and lower the community's energy expenses. The study's initial goal is to assess solar energy's potential as a power source for this purpose.

[10] The influence of grid-integrated large-scale photovoltaic on the power system working (availability, stability and reliability) and protection philosophy is the topic of this research. It evaluates the certification techniques and standards of utility-interactive equipment (grid inverters), which has a direct effect on that of the grid's supply security and power quality.

### III. PROPOSED METHOD

The adoption of an adaptive controller with the capacity to update its settings at each of the operating situations is a viable solution for the PI controller's lack of retuning parameters. The suggested adaptive reference PI (ARPI) controller is simulated using Scilab and MATLAB to enhance the performance by the on-grid Photovoltaic system. This is accomplished by softening the power fluctuations that are caused by changes in the irradiance as well as temperature. Furthermore, LVRT augmentation potentiality is achieved when failures that occur at the point of common coupling inbetween the Photovoltaic system and the grid. In order to increase the efficacy of the suggested adaptive controller, the system's execution is contrasted to that of an ideal Proportional integral controller.

#### A. Working

A DC to DC converter and a DC to AC inverter link the PV system to the grid. The converter raises the PV system's output DC voltage (boost converter). Furthermore, it uses the perturb and observe MPPT approach to track maximum power, while the inverter converts DC voltage to AC voltage and

connects to the grid. The inverter is also adjusted to increase the PV system's grid integration.

A DC-DC chopper control approach is used to optimise the collected energy from Photovoltaic systems utilising a MPPT method during environmental changes like as temperature and irradiation. By controlling the active and reactive load that flows in between the Photovoltaic system and the system's grid, the DC to AC inverter management methods, on the other hand, aim to improvise the performance of grid-integrated Photovoltaic systems under unusual operation scenarios. The inverter is a controller that increases the grid connection of a Photovoltaic system. Photovoltaic systems use PI controllers to meet their LVRT requirements. Furthermore, PI controllers are widely utilised to increase LVRT capabilities by controlling the current and voltage of grid side inverters. The PI controllers improve the grid-connected Photovoltaic systems' transient stability. All of the studies that have been published have suggested using a PI controller for only the LVRT to improve the power transfer from Photovoltaic systems to the grid. There are many trial and error methods for determining PI control settings.

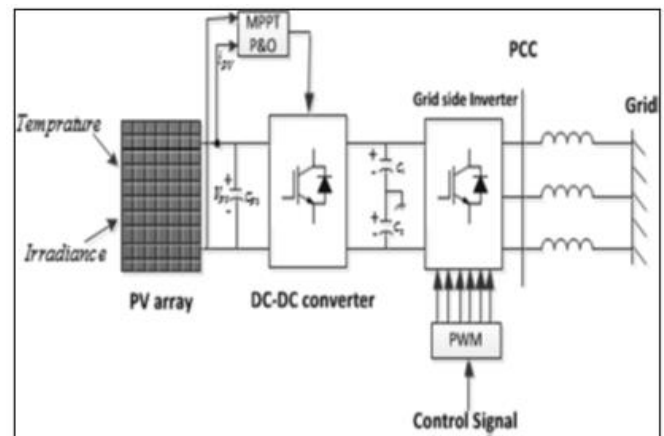


Fig. 1: Block diagram of photovoltaic system with the grid connection.

#### B. PI Controller

The DC link voltage is altered other than the reference voltage when the operational conditions change. The power, current, and voltage of the inverter will all be affected by this adjustment. The system performance will be improved if the DC link voltage is correctly managed. The PI controller is utilized as a benchmark in this study to show how successful is the ARPI (adaptive reference) controller.

By managing the error signal present in between the DC link voltage and anticipated reference value of 800 V, the recommended PI controller updates and stimulates the reference power (Pref), which is then matched to the output power PV. The power needed from the grid to sustain the DC connection voltage changes is the distinction between the two powers. To generate inverter gate pulses, the PCC voltage and reference current are computed, then contrasted to the inverter output current.

**C. Maximum Power Point Tracking**

MPPT (Maximum power point tracking) is a method that is used for transferring the utmost amount of energy from a transducer. Nonlinear characteristic power curves exist in energy transducers such as the solar modules; the ideal load for maximum power production is determined by the operating point for the particular parameters. This method necessitates energy monitoring, establishing the best operating point, and adjusting the load. A variety of strategies may be used to calculate the ideal load.

Through a power converter, the MPPT ensures utmost power transmission from the photovoltaic panels to the grid. An MPPT algorithm is included in the control scheme. This iterative process determines the current or/and voltage of the solar photovoltaic array and serves as a reference for the control system. This reference is then imposed at the solar panel terminals by the power converter.

**SIMULATION RESULTS**

The simulation for three PV modules was done in Scilab XCOS as shown in Figure 2. The results show that the small voltages are amplified to comparatively larger values. The controller and inverter outputs are as shown in Figure 3. The boost converter allows to get such a large amplification in the output voltage. Such units can be combined to get a large voltage at the grid that will help to meet the large-scale power requirements of the society.

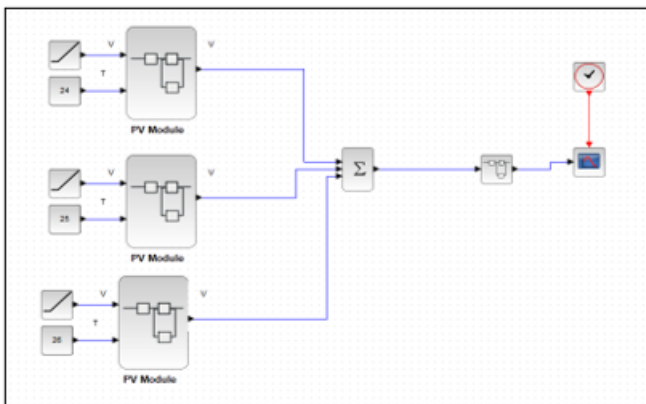


Fig. 2: Scilab-XCOS model of 3 connected PV modules

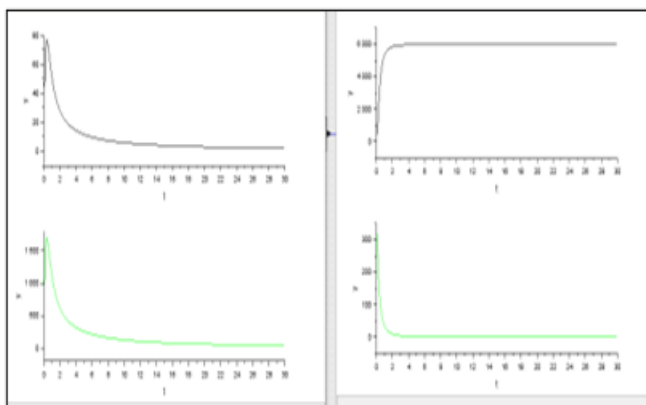


Fig. 3: Inverter and converter output in XCOS

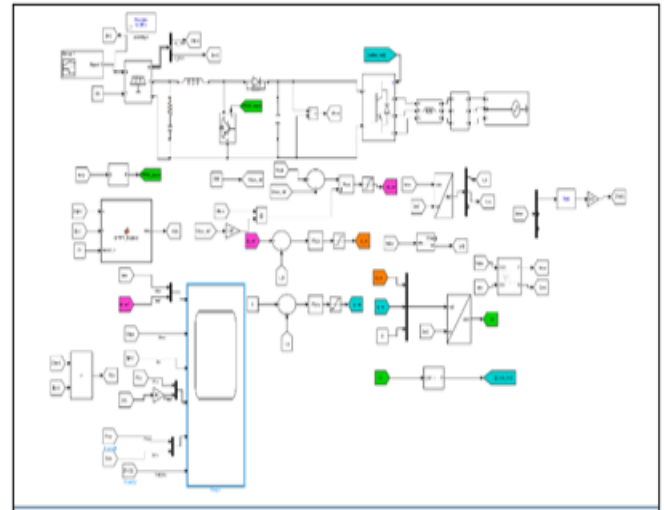


Fig. 4: MATLAB-Simulink Implementation

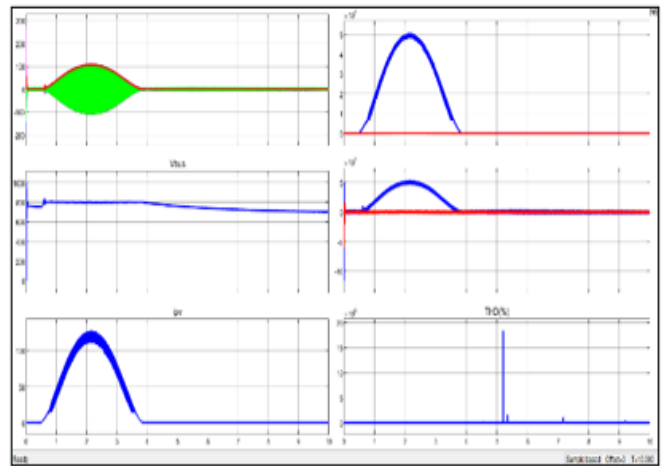


Fig. 5: Output obtained in Simulink implementation

The PV panel with an input of 17 parallel and 14 series modules is obtained. The reference voltage given is 700V. Figure 5 shows the parameters obtained in Simulink implementation.

**IV. CONCLUSION**

The analysis and simulation of the PV system and grid connections are done in the open source software Scilab and MATLAB Simulink. The Scilab features of SciNotes and XCOS are used for the simulations. The suggested control strategy aids in improving PV system grid integration by attaining MPPT and softening power fluctuations caused by environmental variations such as solar irradiance and temperature. Furthermore, it facilitates the grid-connected Photovoltaic system's LVRT functionality during three-phase outages at PCC. This system aids in the enhancement of LVRT capacity by acting as a protective mechanism whenever the DC link fails.

**REFERENCES**

- [1]. Ayman Alhejji, Mohamed I. Mosaad, "Performance enhancement of grid-connected PV systems using adaptive reference PI controller", *Ain Shams Engineering Journal*, 25 September 2020.
- [2]. Nhamo Dhlamini, S.P Daniel Chowdhury, "Solar Photovoltaic Generation and its Integration Impact on the Existing Power Grid", *IEEE PES/IAS PowerAfrica*, 2018.
- [3]. Khan Nouman, Zaman Asim, Khan Qasim, "Comprehensive Study on performance of PID Controller and its Applications", 2nd IEEE Advanced Information Management, Communicates, Electronic and Automation Control Conference (IMCEC), 2018.
- [4]. Mahesh Kumar, "Technical Issues and Performance Analysis for Grid Connected PV System and Present Solar Power Scenario", *International Conference on Electrical and Electronics Engineering (ICE3) 2020*.
- [5]. Jerry Kumar, Nanik Ram Parhyar, Manoj Kumar Panjwani, Danish Khan, "Design and performance analysis of PV grid-tied system with energy storage system", *International Journal of Electrical and Computer Engineering (IJECE)*, 2020.
- [6]. B.G. Sujatha, G.S. Anitha, "Enhancement of PQ in grid connected PV system using hybrid technique", *Ain Shams Engineering Journal*, Volume 8, NO. 6, June 2016.
- [7]. K.N. Nwaigwe, P. Mutabilwa, E. Dintwa, "An overview of solar power (PV systems) integration into electricity grids", *Materials Science for Energy Technologies, KeAi*, 16 July 2019.
- [8]. Harish Kumar Khyani, Dr. Jayashri Vajpai, "Integration of Solar PV Systems to the Grid: Issues and Challenges", *International Journal of Engineering Research & Technology (IJERT)*, ISSN: 2278-0181, ETRASCT' 14 Conference Proceedings.
- [9]. Youssef Kassem, Huseyin Gokcekus and Ali Guvensoy, "Techno-Economic Feasibility of Grid-Connected Solar PV System at Near East University Hospital, Northern Cyprus", *MDPI*, 15 November 2021.
- [10]. Erik DE JONG, Peter VAESSEN, "The Impact Of Large-Scale PV On Distribution Grid Operation And Protection; And Appropriate Testing", *CIREN, CIREN Workshop - Lisbon 29-30 May 2012*.
- [11]. Bipin Singh, Arunima Verma, Vinod Kumar Giri, "Power Quality Improvement of Grid Connected PV System", *IEEE India Council International Subsections Conference (INDISCON)*, 2020.
- [12]. Noha Eissa Morsy, Mahmoud A. Attia, Almoataz Y. Abdelaziz, Neeraj Kanwar, "Optimization of the PI controller to improve the dynamic performance of grid-connected photovoltaic system", *IEEE*, 2019.
- [13]. J. Sreedevi, Ashwin N, M. Naini Raju, "A Study on Grid Connected PV system", *IEEE* 2016.
- [14]. Hamza B. Al Smadi, "Overview of Grid-Connected PV Systems Challenges with Regards to Grid Stability", May 2018.
- [15]. Muhammad Saad Iqbal, Yasir Amir Khan Niazi, Umer Amir Khan a, Bang-Wook Lee. "Real-time fault detection system for large scale grid integrated solar photovoltaic power plants", *International Journal of Electrical Power and Energy Systems*, 2021.
- [16]. Ayaz Ahma, L. Rajaji, A. Iqbal., "A novel current controller design for grid integrated PV inverter system", *Research Article*, 28 January 2021.
- [17]. Priyabrata Pattanaik, "Boost Converter based on Photovoltaic Energy System", *International Journal of Innovative Technology and Exploring Engineering (IJITEE)* ISSN: 2278-3075, Volume-8, Issue-11S, September 2019.
- [18]. K. Umadevi, Dr. C. Nagarajan, "Photovoltaic System With Dc-Dc Boost Converter Topology Using Psim Software", *International Journal of Current Research and Modern Education (IJCRME)*, NCFTCCPS - 2016.
- [19]. Akhil Raja, R.P.Praveen, "Highly efficient DC-DC boost converter implemented with improved MPPT algorithm for utility level photovoltaic applications", *Ain Shams Engineering Journal*, Volume 13, Issue 3, May 2022.
- [20]. R. Uthirasamy, V. Kumar Chinnaiyan, S. Vishnukumar, Alagar Karthick, V. Mohanavel, Umashankar Subramaniam and M. Muhibbullah, "Design of Boosted Multilevel DC-DC Converter for Solar Photovoltaic System", *International Journal of Photoenergy*, Volume 2022.
- [21]. Yavuz Bahadır Koca, Yılmaz Aslan, Ahmet Yonetken, Yuksel Oguz, "Boost Converter Design and Analysis for Photovoltaic Systems", 4th International Conference on Engineering Technology and Applied Sciences (ICETAS), April 2019.
- [22]. Fernando M. Oliveira, Sergio A. O. da Silva, Fabio R. Durand, Leonardo P. Sampaio, "Application of PSO Method for Maximum Power Point Extraction in Photovoltaic Systems Under Partial Shading Conditions", *IEEE*, 2015.
- [23]. Gancalo Calvino, Jose Mariano, Maria Do Rosario Calado, "Design and Implementation of MPPT System Based on PSO Algorithm", *International Conference on Intelligent Systems (IS)*, *IEEE*, 2018.
- [24]. Amit Kumer Podder, Naruttam Kumar Roy, Hemanshu Roy Pota, "MPPT methods for solar PV systems: a critical review based on tracking nature", *The Institution of Engineering and Technology*, 2019.
- [25]. Salman Salman, Xin AI and Zhouyang WU, "Design of a P-&-O algorithm based MPPT charge controller for a stand-alone 200W PV system", *Protection and Control of Modern Power Systems*, 2018.